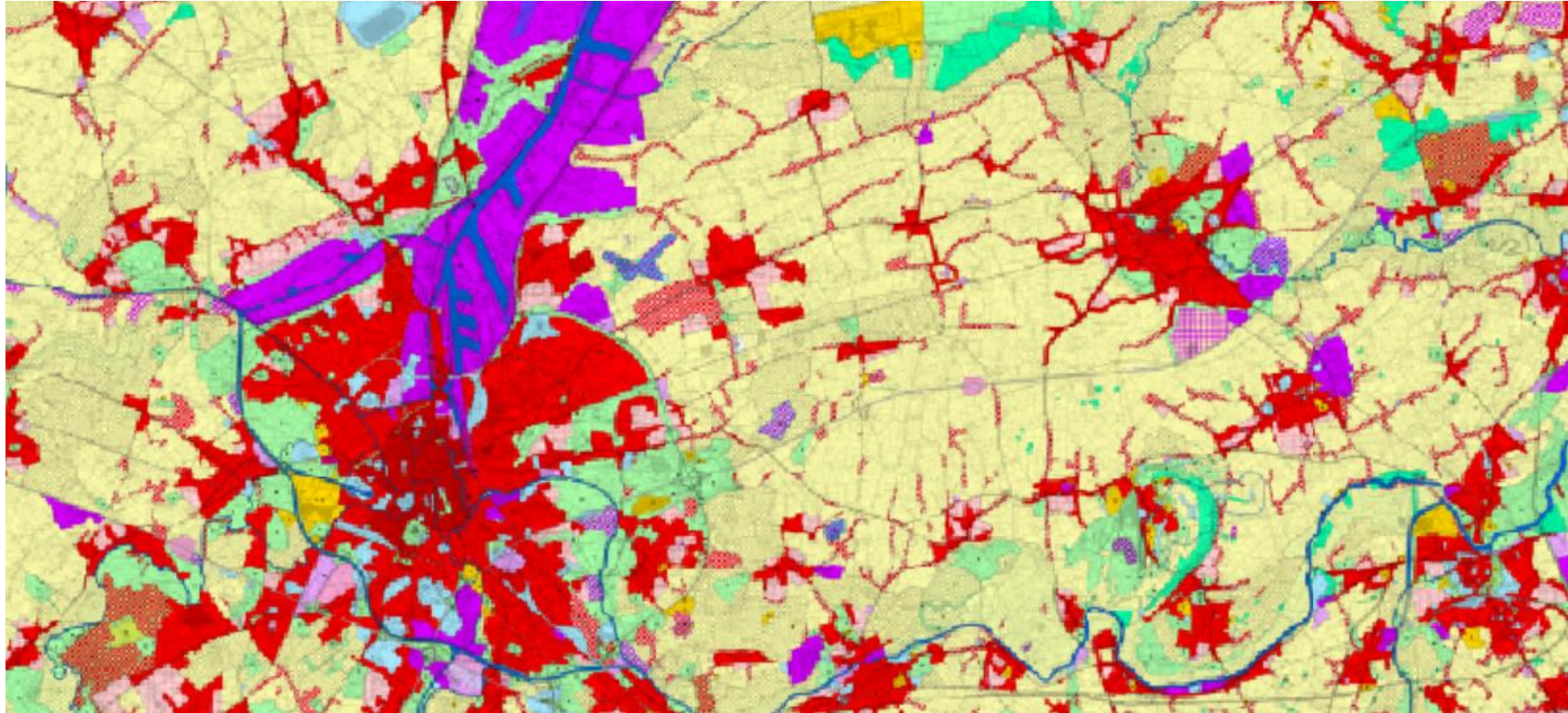




**De WEG tussen
GIS en BIM**



Wat is GIS?



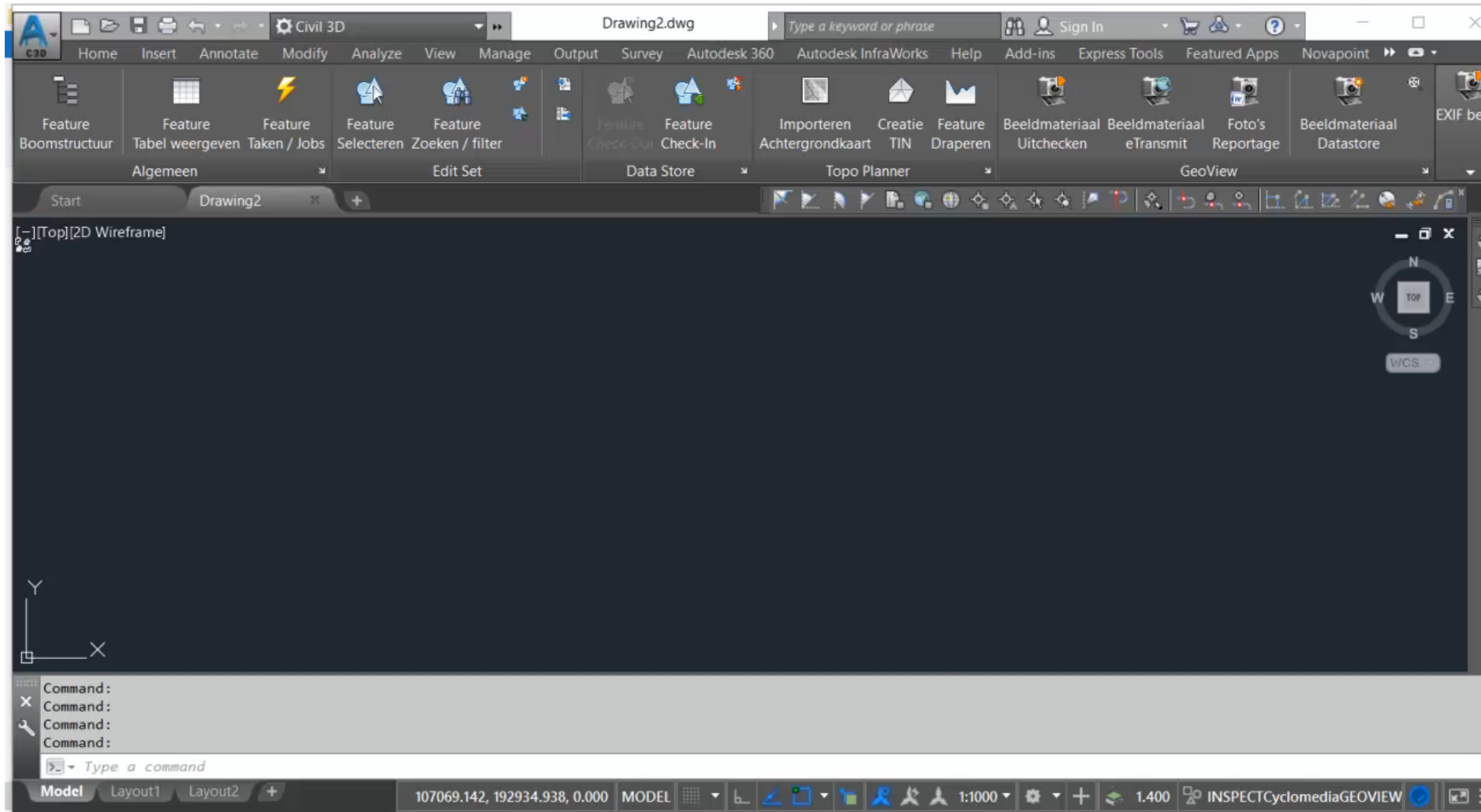
GRB

The screenshot displays the Geopunt-kaart web application interface. At the top, there is a search bar with the placeholder text "Adres, interessante plaats, perceelnummer, trefwoord, coördinaat". The main map area shows a residential area with several red-outlined parcels. Parcel numbers visible include 857T, 48, 44, 865W2, 865V, and 865R. A street labeled "Augustijn Moreelstraat" runs vertically through the map. The interface includes a top navigation bar with icons for search, home, help, print, share, and full screen. On the left, there is a vertical zoom control and a thumbnail for the "Achtergrond" (background) layer. At the bottom, a scale bar indicates 10 meters and the scale is 1:355. The coordinates are 51°04'59,342"NB - 3°45'23,949"OL. A sidebar menu on the right, titled "Kaarten", lists various map layers and categories such as "Basiskaart, luchtfoto en adres", "Bouwen en wonen", "Cultuur, sport en toerisme", "Energie", "Grenzen", "Historische kaarten", "Hoogte", "Landbouw, visserij en economie", and "Mobiliteit". A button "Eigen kaart toevoegen" is also present in the sidebar. At the bottom right, there are icons for "Tools", "Route", "Legende", and "Kaarten".

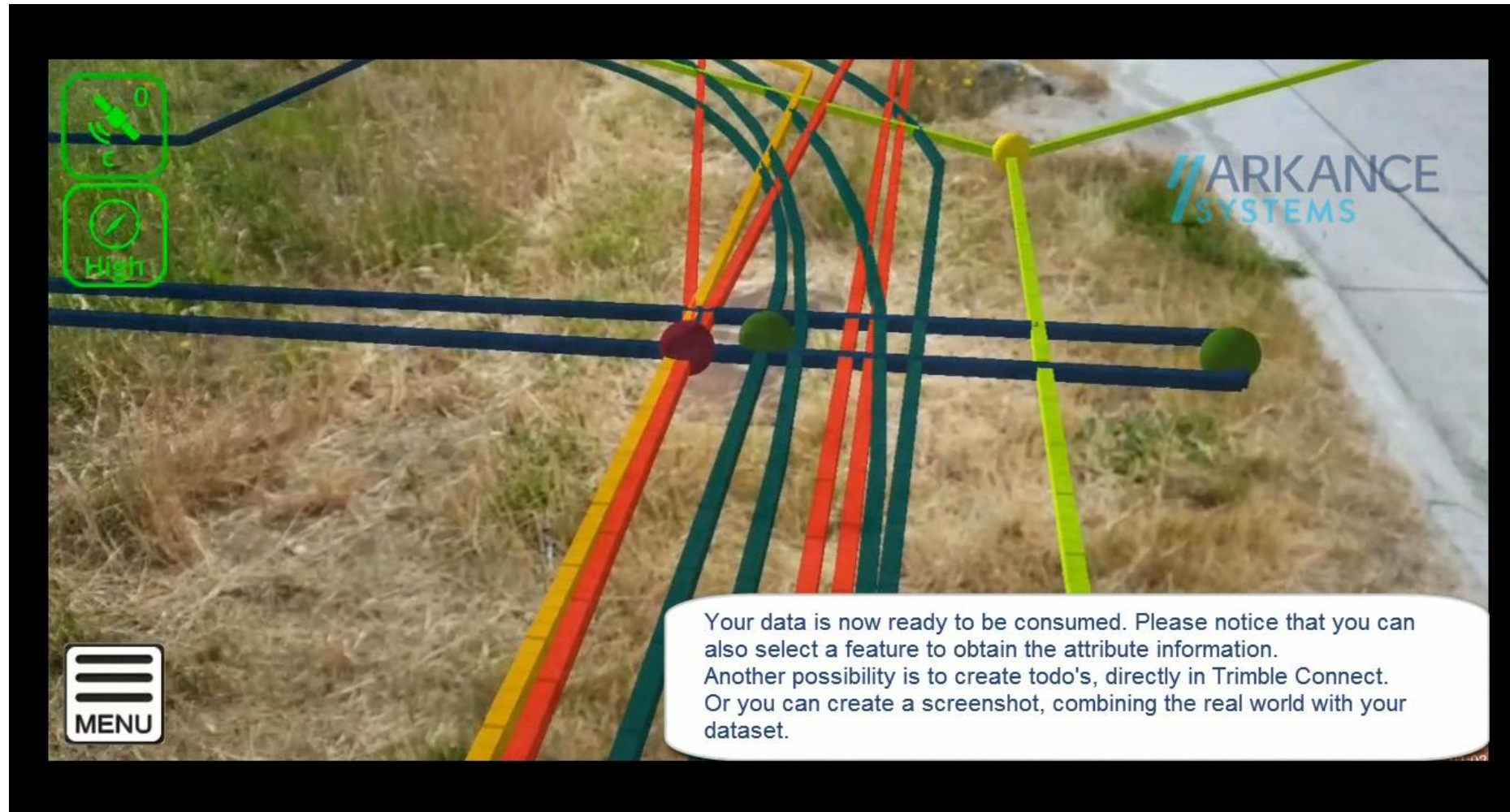
KLIP



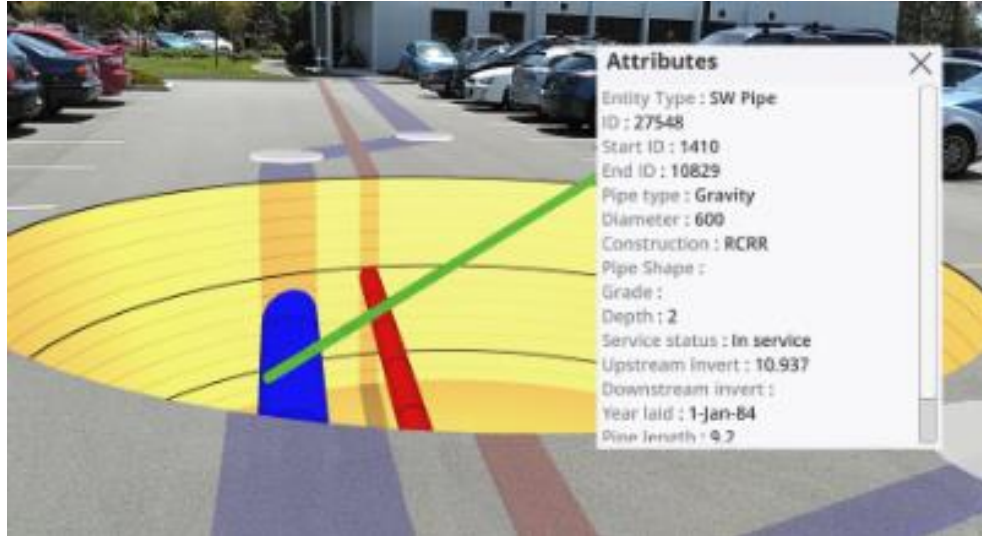
IMKL naar ontwerp omgeving



Utilities – KLIP data



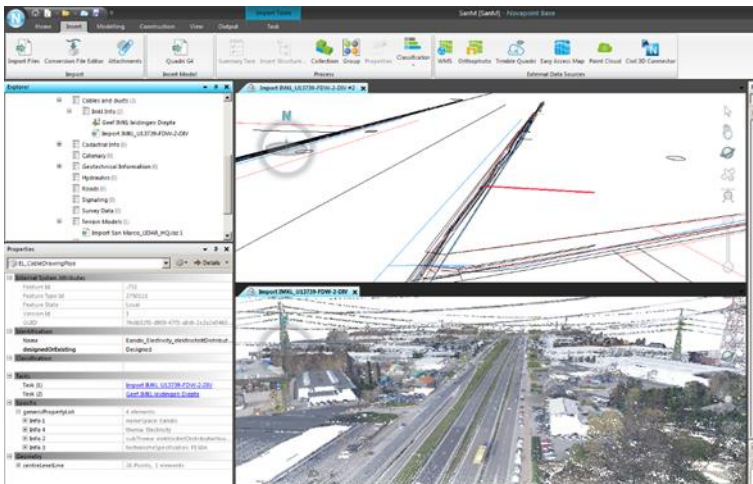
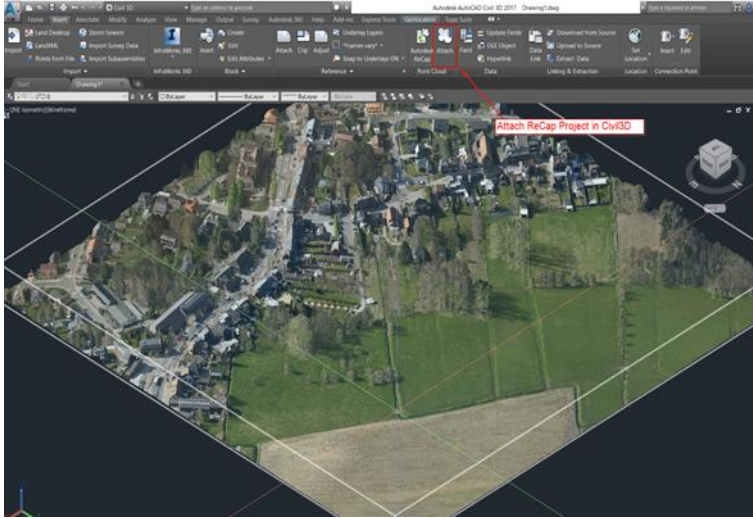
IMKL



DHMV



Clip online LIDAR data -> LAZ Pointcloud



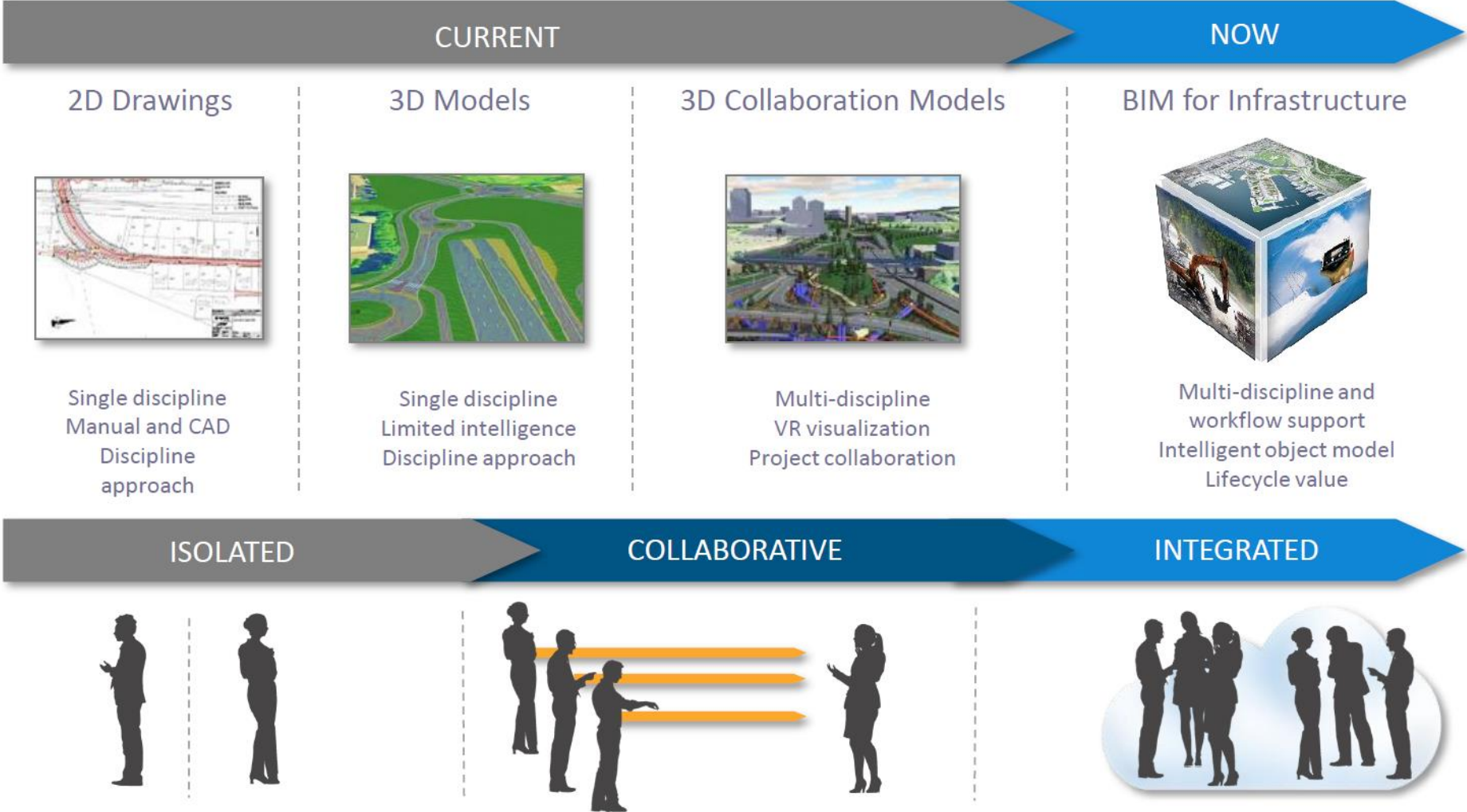
GIS en BIM



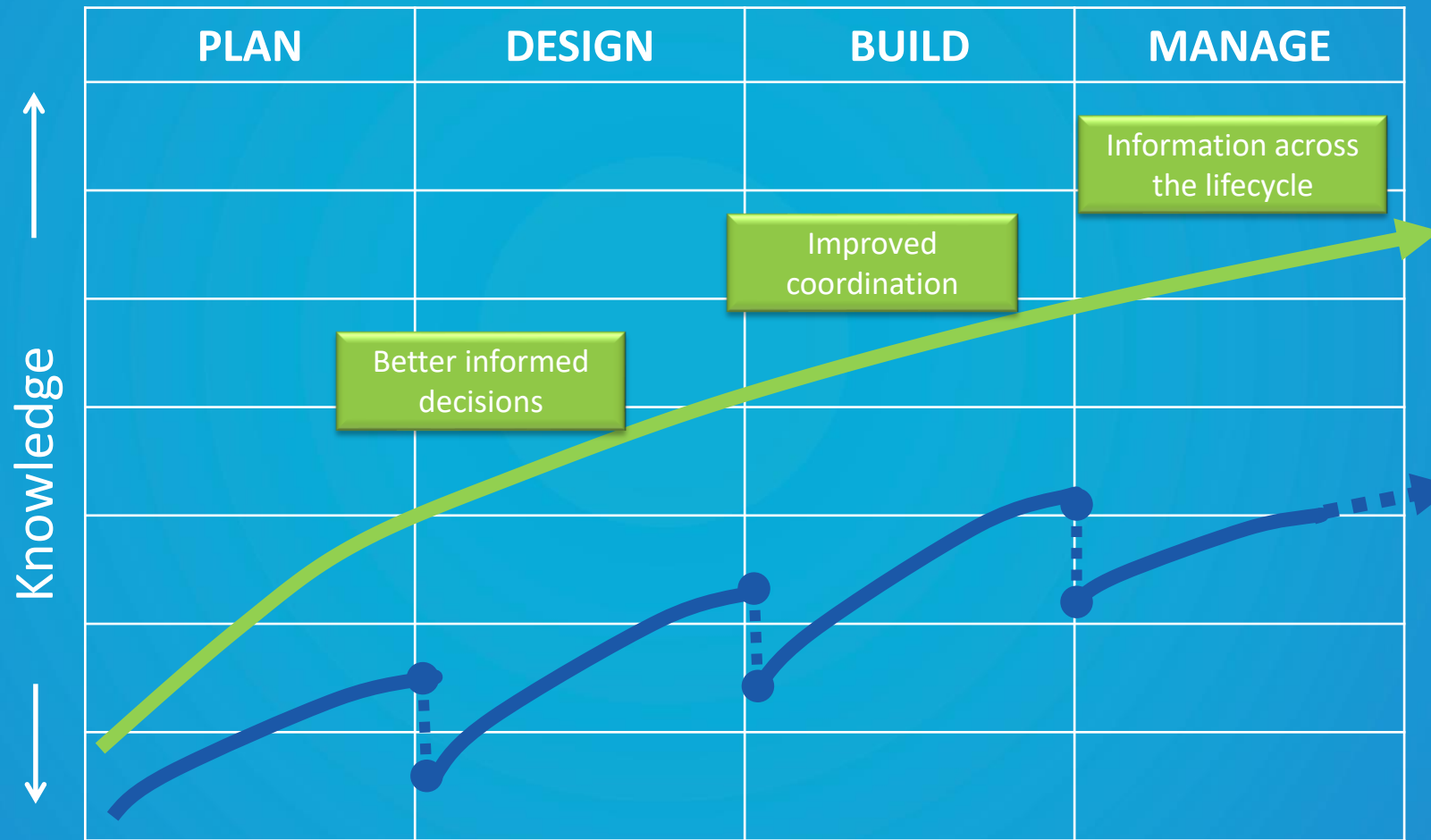
BIM en analyse



Evolution of the Design Process



Shift in Project Execution



Wegontwerp - IMKL

Arkance Systems San Marco 2018 ▾ Dashboard Maps Presentations Topics

Overzicht bouwput met leidingen thv nieuw gebouw - CDH ×

Search

3D overview survey data - CDH
a month ago

Overzicht bouwput met leidin...
6 months ago

Integan_Telecommunications_el...
TelecommunicationCable

Info 1
namespace: be_integan_integan

Info 4
thema: Telecommunications

Info 2
subThema: elektronischeCommunicatie

Info 3
ContactEmail: liggingsplannen@integan.be

Topics

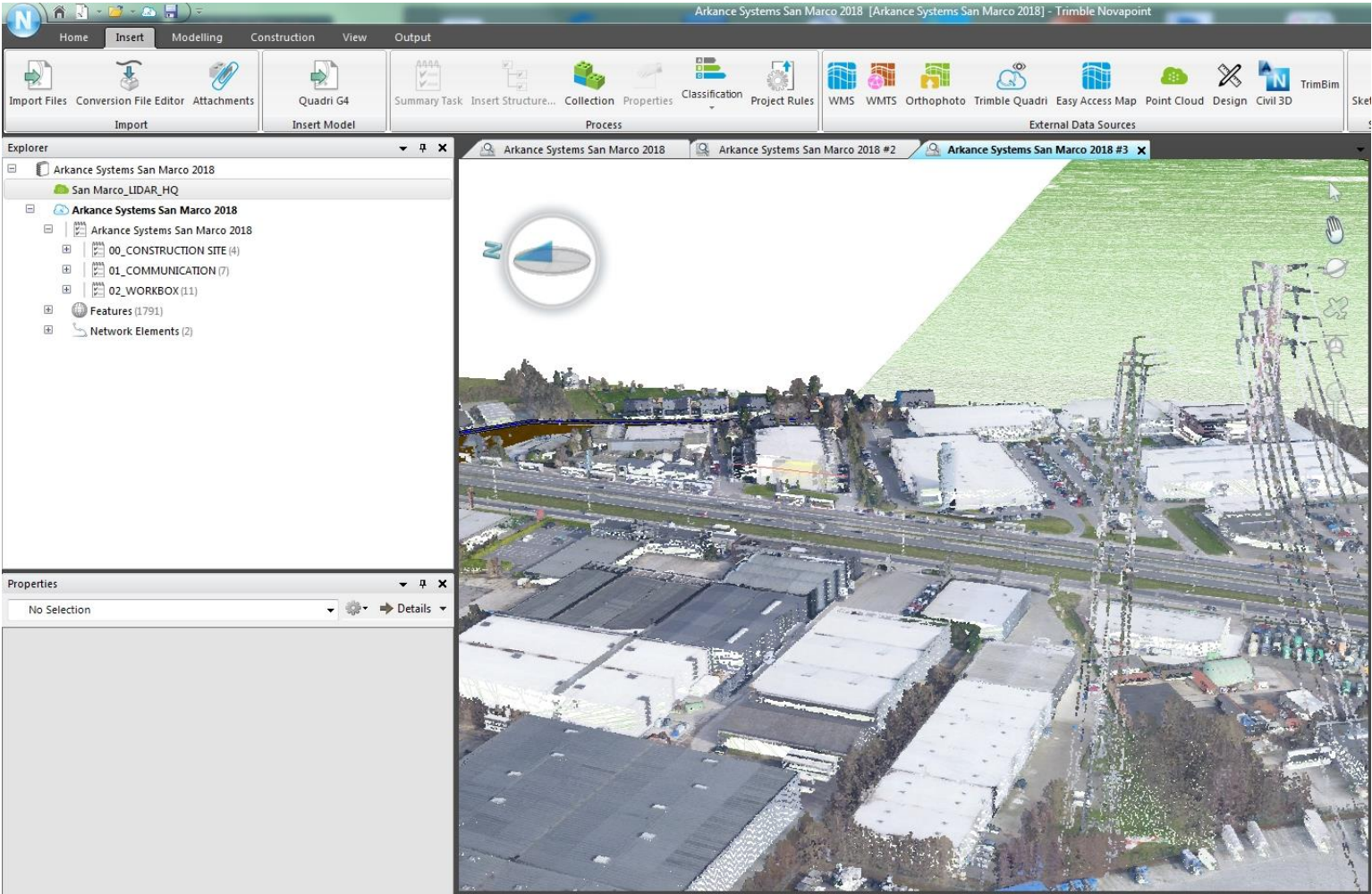
Search

CR : ajouter une fenetre dans le
batiment 007 4 weeks ago
Chris DHEERE > Gert Rombaut
Assigned Normal RFC

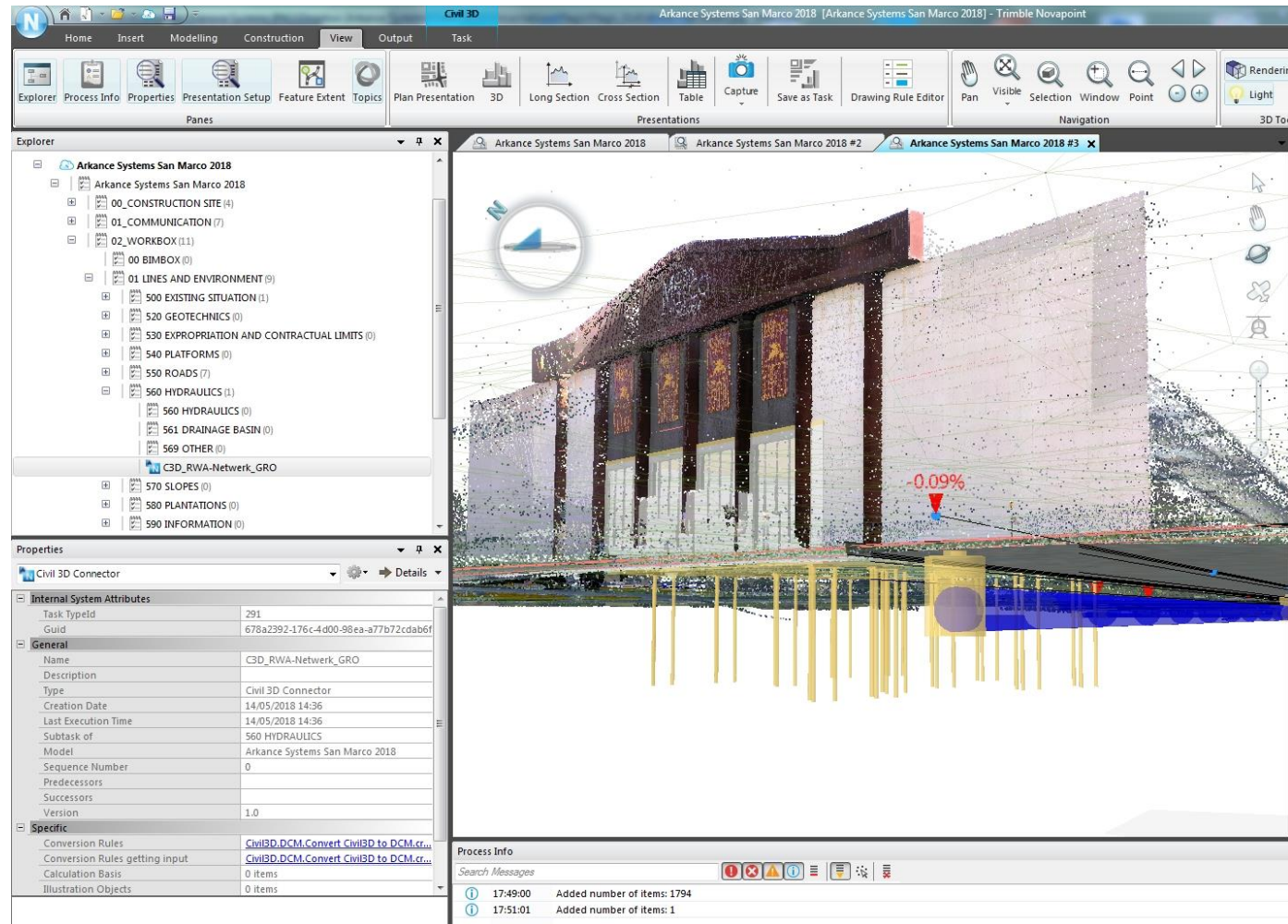
NC - 001 : Cross Road for Service
Road is too small 4 weeks ago
Chris DHEERE > Gert Rombaut
Assigned Urgent Non Conformity Road Conformity

New San Marco 4 months ago
Gert Rombaut > Chris DHEERE
Assigned Hydraulics Issue

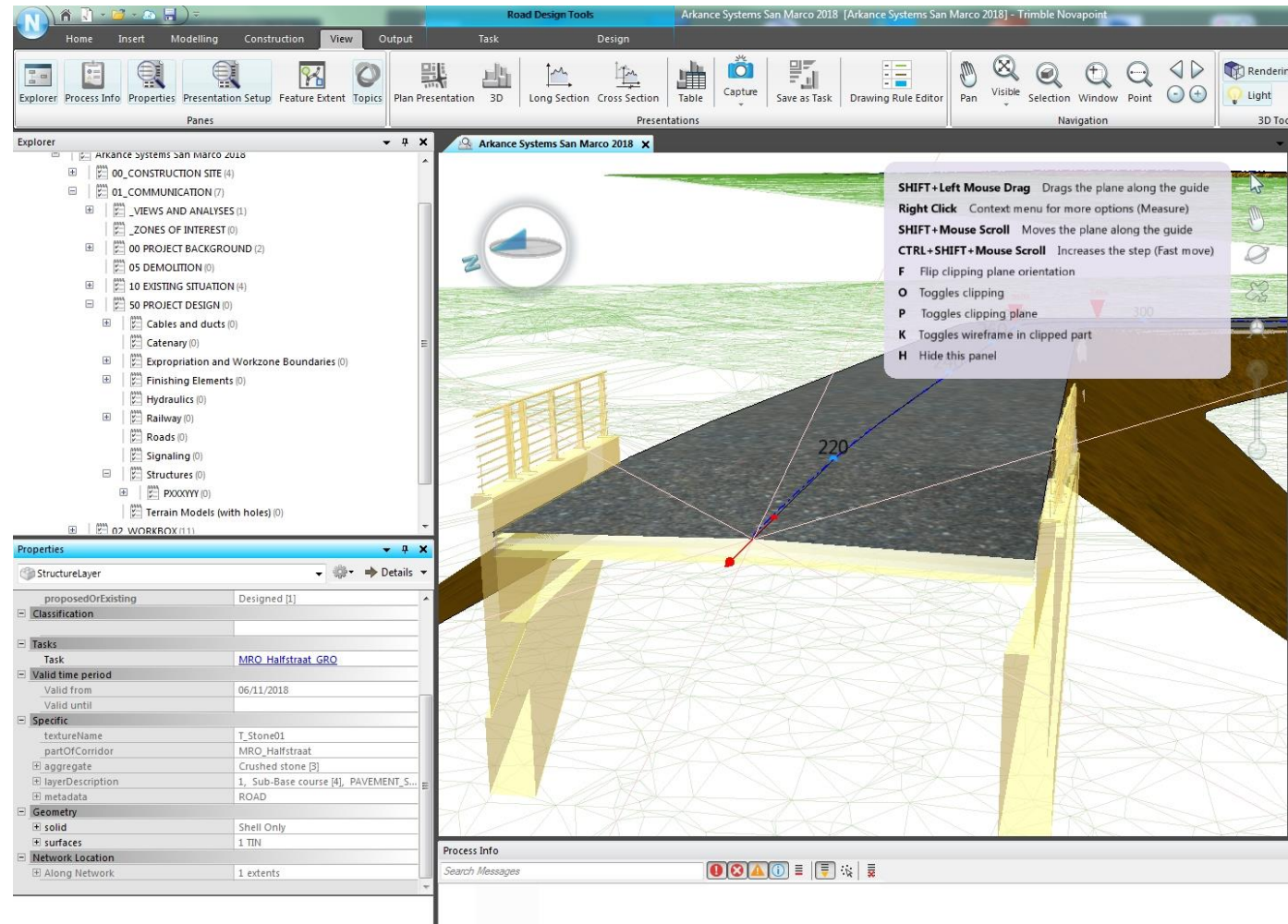
Wegontwerp



Wegontwerp



Wegontwerp



Digital Construction

Risk Management

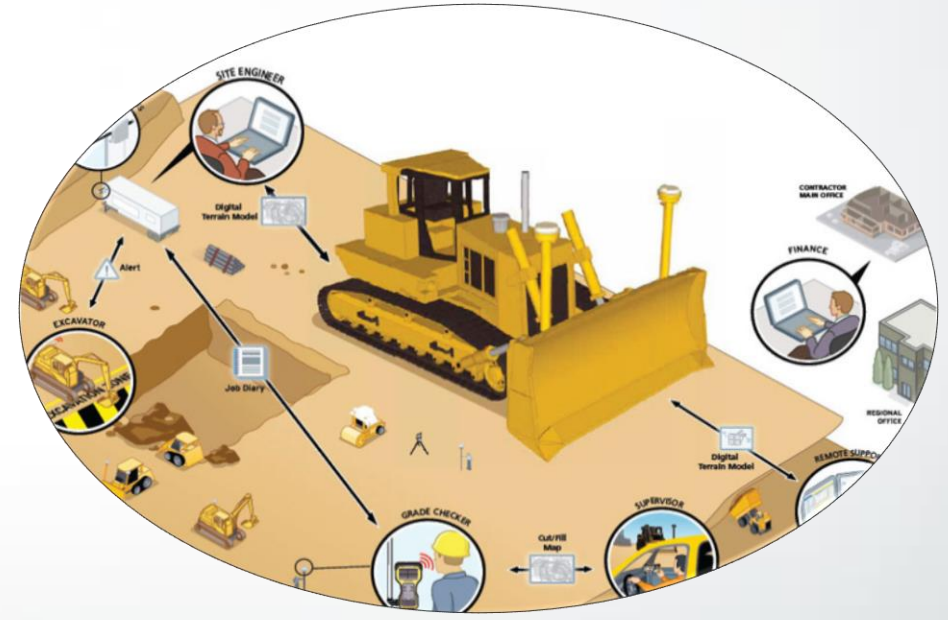
Construction Sustainability

Quality Control

SAFETY

profitability

Augmented Reality

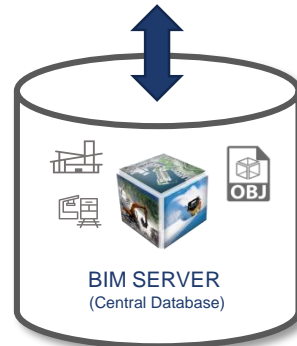
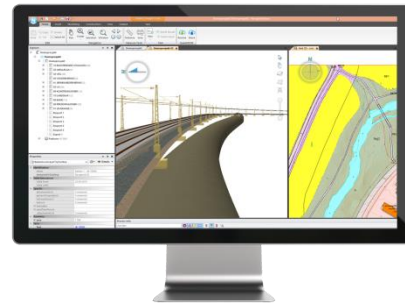


Workflow

1 Data preparation
Constructible Model



2 Store Model
In BIM Server



3 Send Machine Control
data to operator



Machine Control



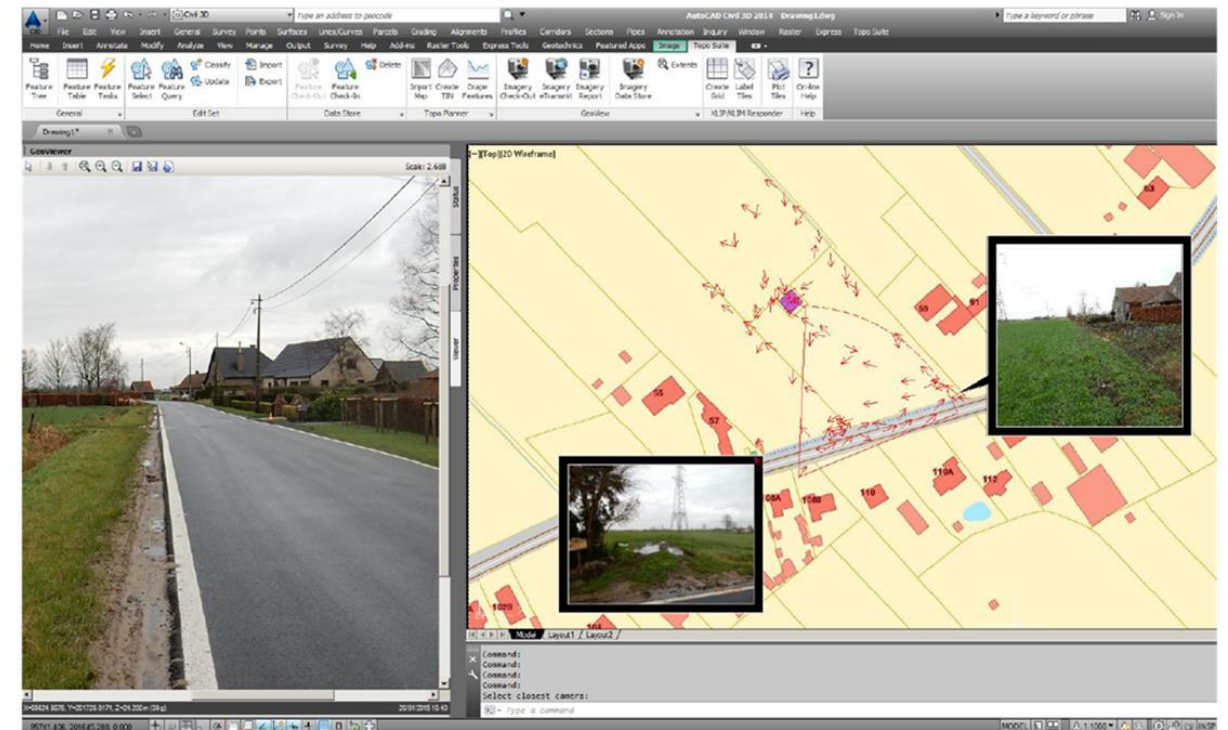
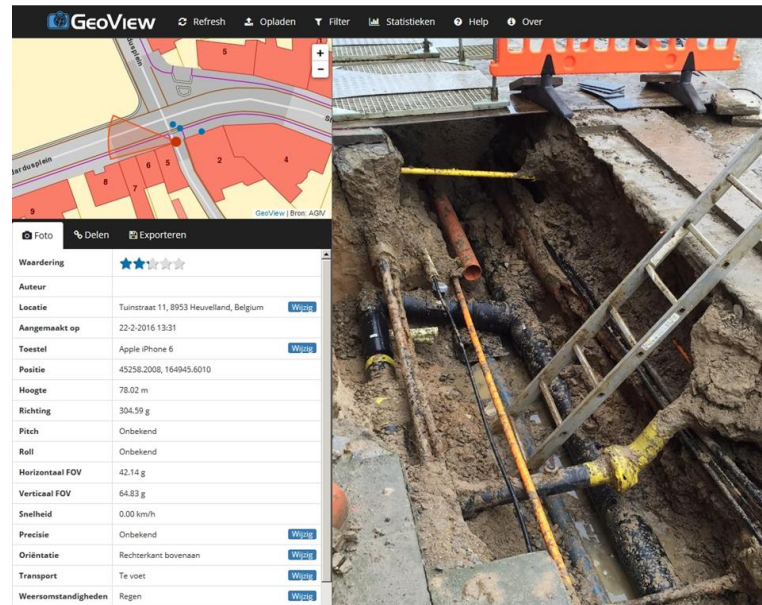
Kunstwerken en riolering



Uitdaging 2



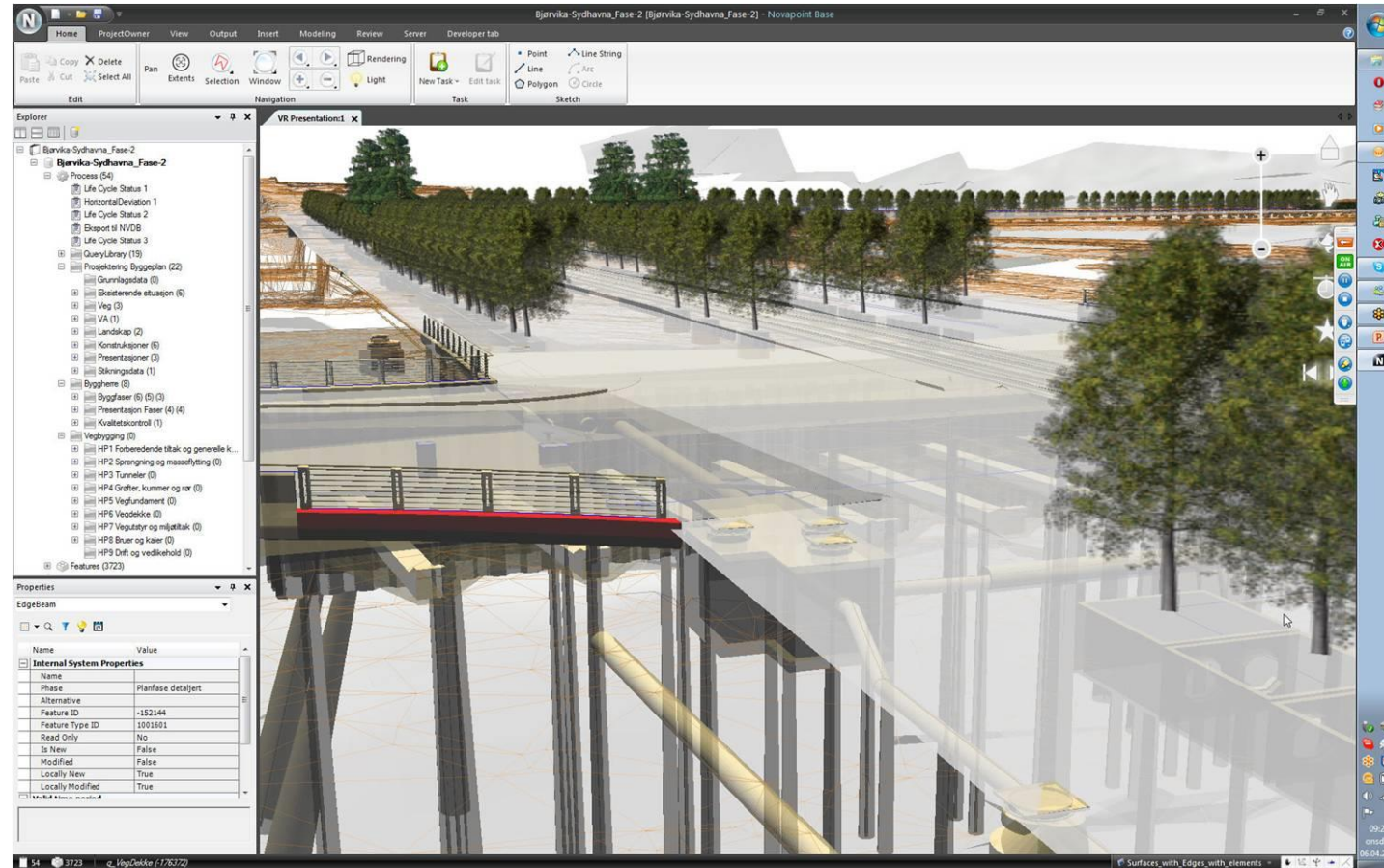
Inspectie data in ontwerp/GIS






OPERATION & MAINTENANCE

CIVIL BIM MODEL





Formerly known as  VIANOVA

Dank u!

Contact

Name : Jaap Kooistra

Mobile : +32 473 560 285

Tel. : +32 9 331 77 00

E-mail : jkooistra@arkance-systems.com

Member of the group  ARKANCE